



Village of Schuylerville

Comprehensive Plan 2024 Update



Clothier Planning & Consulting



Public Information Meeting

May 9, 2024

Follow the Plan on the Village Website: <https://villageofschuylerville.org/comprehensive-plan/>

Facebook Page: [*Village of Schuylerville 2024 Comp Plan*](#)

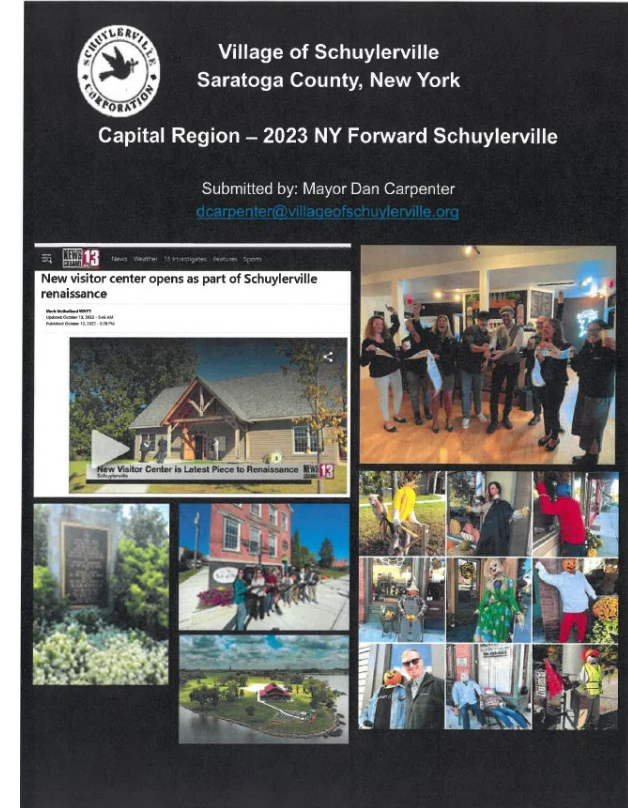
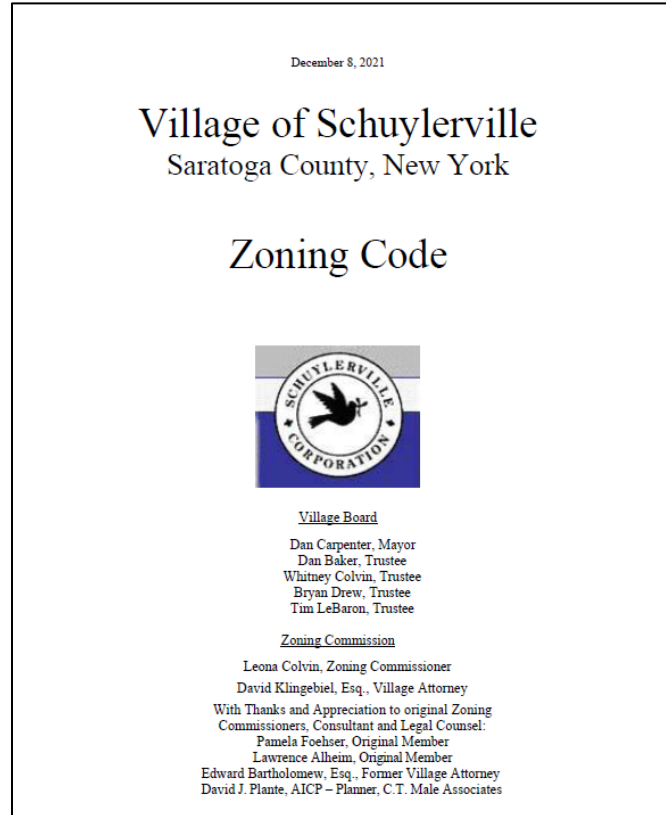
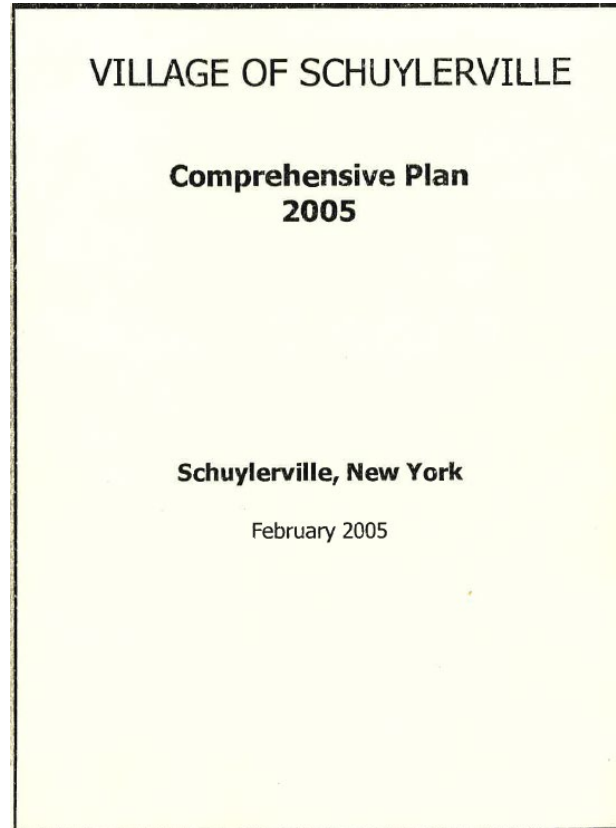
We invite you to complete the Community Survey: <https://www.surveymonkey.com/r/PXKNH3R>



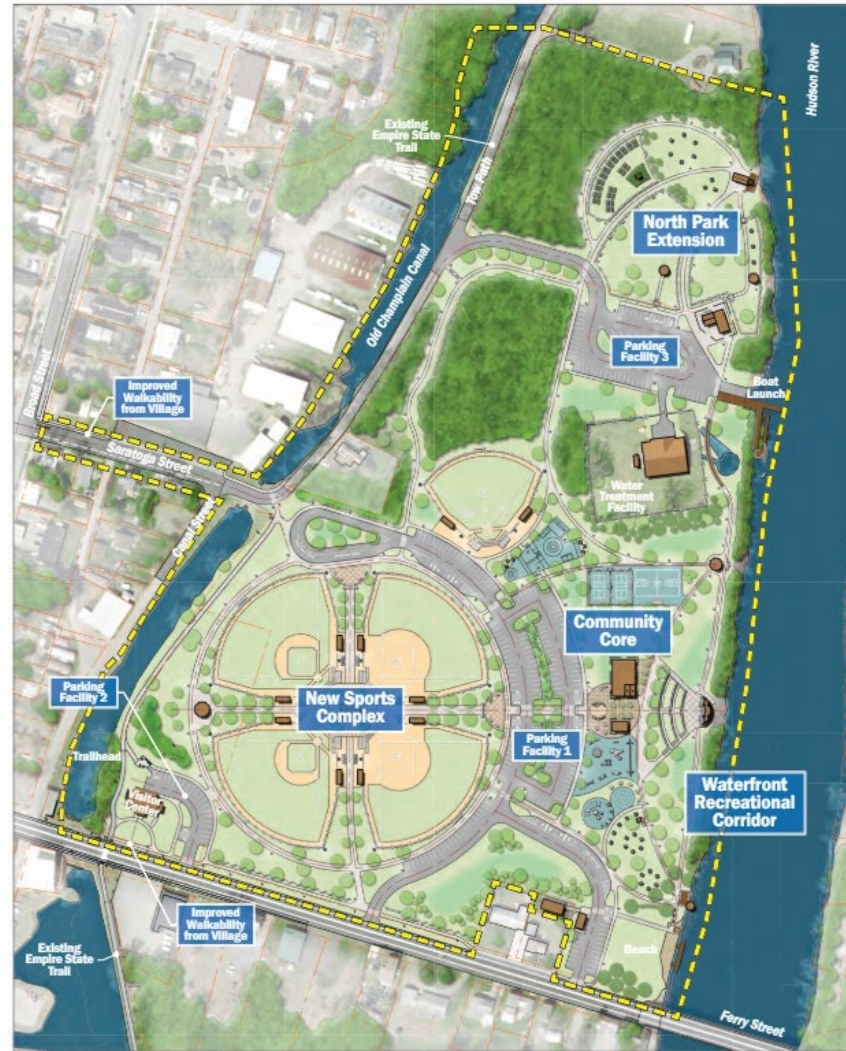
WHAT IS A COMPREHENSIVE PLAN?

- ✓ A Comprehensive Plan articulates residents' desire for the future of the community.
- ✓ It provides a strategic roadmap of initiatives and a funding plan for projects.
- ✓ It identifies and celebrates Schuylerville's achievements.
- ✓ It includes an inventory and condition of existing resources and identifies feasible potential opportunities.
- ✓ It improves the success of grant applications.

PLANNING CONTEXT

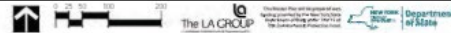


PLANNING CONTEXT



Fort Hardy Park Master Plan Overall Development Plan

Village of Schuylerville, New York
May 2022



P R I O R I T Y T O P I C A R E A S

Economic Development

Historic and Cultural Resources

Capital Improvements

Health and Emergency Services

Land Use and Zoning

Natural Resources and Climate Resiliency

Infrastructure and Utilities

Housing

Parks and Recreation

Childcare

PROGRESS

- ✓ Committee Meetings
- ✓ Village Webpage
- ✓ Social Media
- ✓ April Newsletter
- ✓ Community Survey
- ✓ Public Information Meeting

VILLAGE OF SCHUYLerville 2024 COMPREHENSIVE PLAN UPDATE

APRIL 2024 NEWSLETTER



Welcome to the Village of Schuylerville Comprehensive Plan Update!

This project is an update of the 2005 Schuylerville Comprehensive Plan. A Comprehensive Plan is both a vision for the future and a roadmap for how to achieve the vision. It provides direction to the Village Board of Trustees, Planning Board, and Zoning Board of Appeals for making decisions about future improvements. This planning effort will advance strategies to address new priorities in economic development, capital improvements, housing, childcare, transportation, infrastructure, climate resiliency, and recreation. Funds for this update were granted through the Hudson River Valley Greenway Communities Grant Program. The plan will also provide the foundation and support for potential future revisions to the zoning ordinance and map.

What is the difference between the Comprehensive Plan and NY Forward?

The comprehensive plan update will complement and provide the foundation for the NY Forward grant that is expected to start in late spring. The comprehensive plan boundary is the entire Village whereas the NY Forward program has a much smaller boundary that will concentrate on the downtown area.

Your Opinion Matters!

To keep you informed, the Village has developed a folder on its home webpage under the "Government" heading. Click on this link or the QR code to take you directly to the webpage: <https://villageofschuylerville.org/comprehensive-plan/>.

Also, a Facebook page under *Village of Schuylerville 2024 Comp Plan* has been created to provide information only. In addition, in the near future an opinion survey will be available to all residents. This will be a way for you to make the Village aware of your concerns and ideas for the betterment of the community.



Please Join Us for the First Public Information Meeting

Thursday, May 9, 2024

6:30 - 8:00PM at the Schuylerville American Legion, 6 Clancy Street, Schuylerville

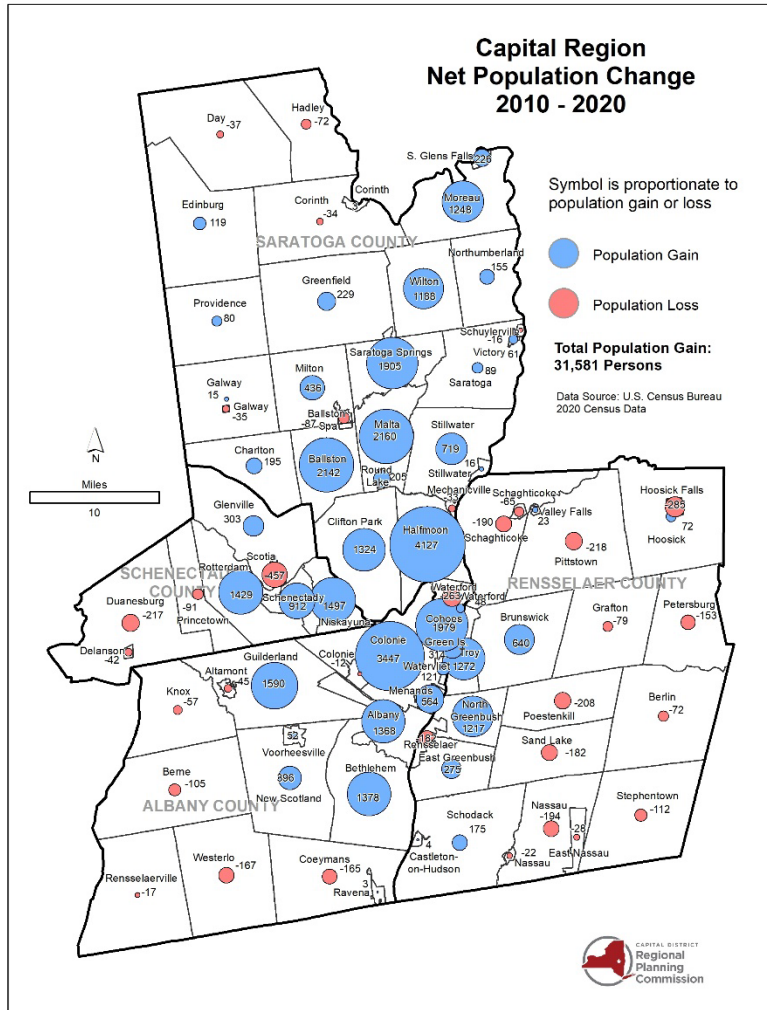
Agenda: Review the Comprehensive Plan project and listen to your concerns and ideas.

Contact Information

Tracey M. Clothier, Clothier Planning and Consulting; tclothier@nycap.rr.com

Dan Carpenter, Mayor, Village of Schuylerville; dcarpenter@villageofschuylerville.org

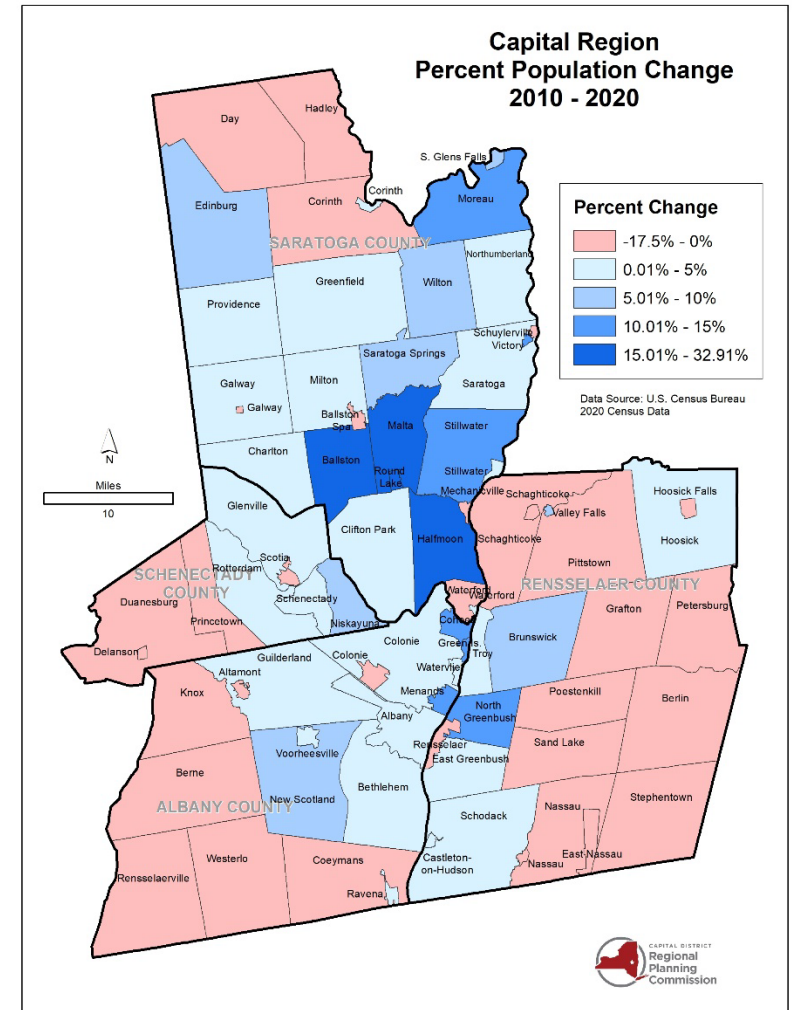
DEMOGRAPHICS



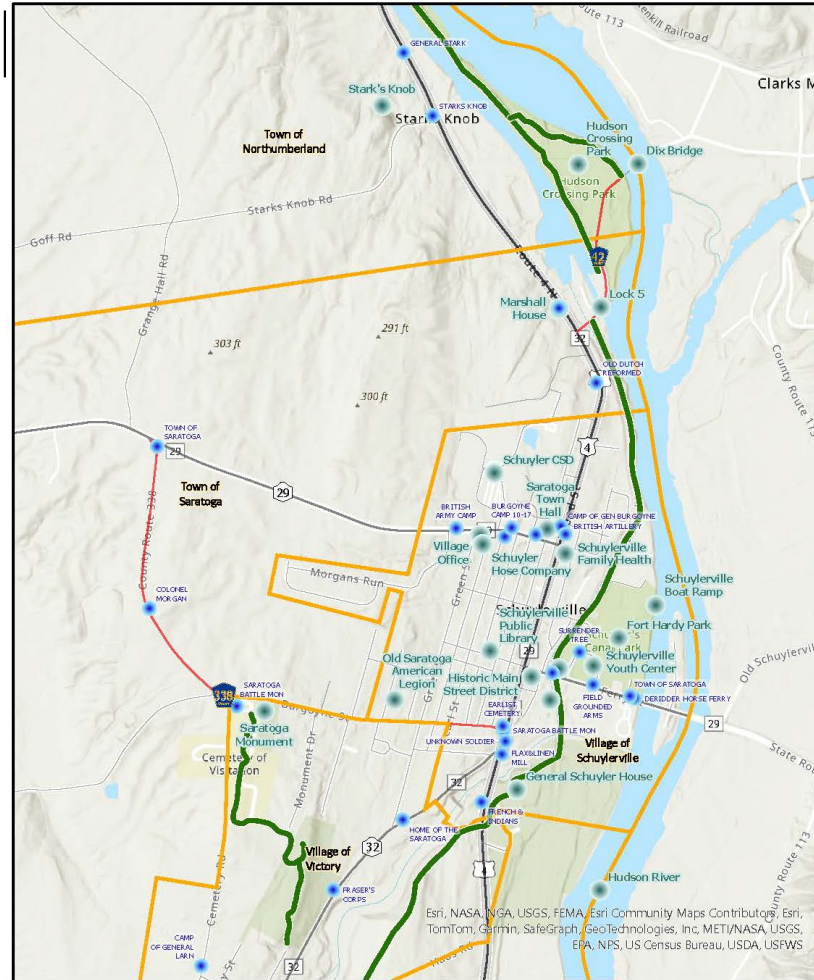
Schuylerville Historical population

Census	Pop.	%±
1860	1,348	—
1870	1,367	1.4%
1880	1,617	18.3%
1890	1,387	-14.2%
1900	1,601	15.4%
1910	1,614	0.8%
1920	1,625	0.7%
1930	1,411	-13.2%
1940	1,447	2.6%
1950	1,314	-9.2%
1960	1,361	3.6%
1970	1,402	3.0%
1980	1,256	-10.4%
1990	1,364	8.6%
2000	1,197	-12.2%
2010	1,386	15.8%
2020	1,370	-1.2%

U.S. Decennial Census^[7]



SCHUYLERVILLE

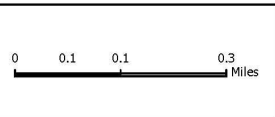
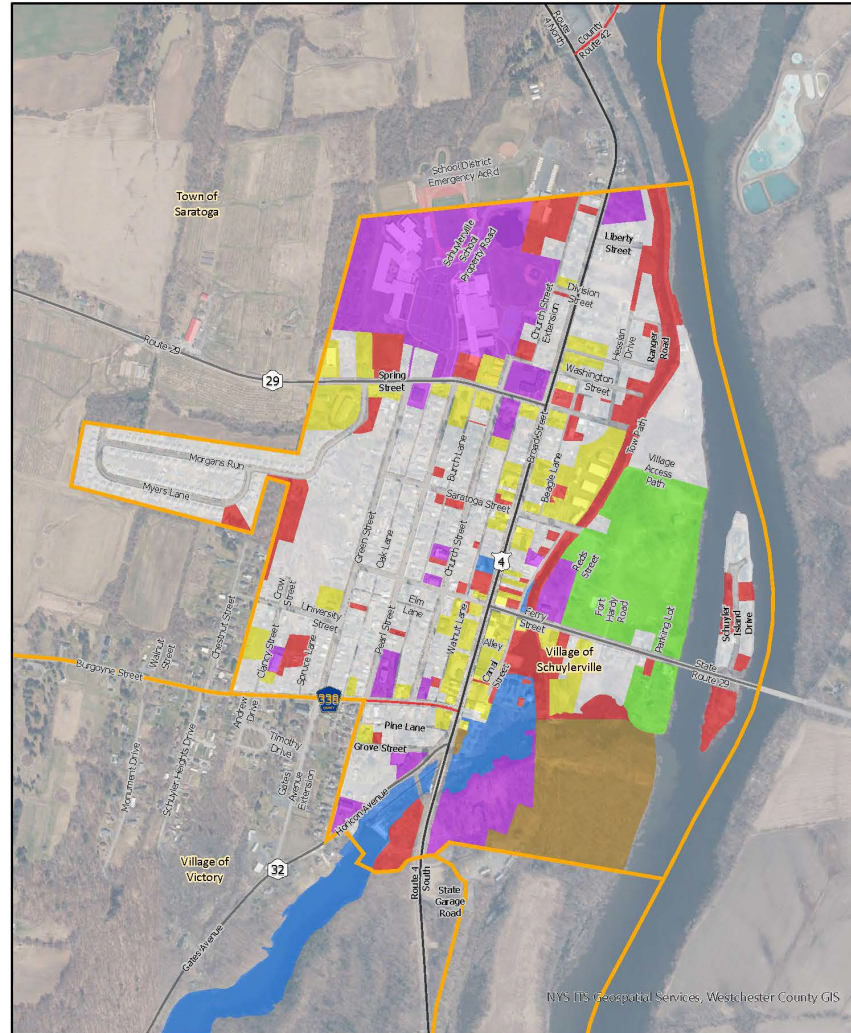


		<ul style="list-style-type: none"> ● Historic Marker ● Village Resource — Trail 	<p>Village of Schuylerville Resource & Historic Marker Map</p>	
--	--	--	--	--

SCHUYLerville



SCHUYLVILLE



- Residential
- Vacant Land
- Commercial
- Recreation and Entertainment
- Community Services
- Public Services
- Wild, Forested, Conservation Lands, & Public Parks

Village of Schuylerville
Land Use Map



DISCUSSION QUESTIONS

What makes Schuylerville a special place to live?

If you could describe Schuylerville in one word, what would it be?

DISCUSSION QUESTIONS

How do you feel about the future of Schuylerville over the coming years?

- Optimistic - things are getting better
- Indifferent - things will stay pretty much the same
 - Pessimistic - things are getting worse

DISCUSSION QUESTIONS

What changes would you like to see in Schuylerville the next 5-10 years?

DISCUSSION QUESTIONS

What are the issues or challenges limiting the Village?

What opportunities, initiatives or projects would you suggest?